



**THE LONDON SCHOOL  
OF ECONOMICS AND  
POLITICAL SCIENCE**

**IN SHORT**





# Contents

About LSE	2
History of LSE	5
Students and alumni	6
Staff	9
World leaders	10
Teaching	13
Research	14
Engagement	17
International partnerships	18
New Academic Building	21
Events	22
Library and IT	25
Students' Union	26
Widening participation	29
Careers Service	30
Language Centre	30
Other forms of study	33
Scholarships and financial support	34
Advice for applicants	34
Connecting with business	36
Finance	39
Governance	39
Contacts	40

# About LSE

The London School of Economics and Political Science – LSE – is one of the foremost social science universities in the world.

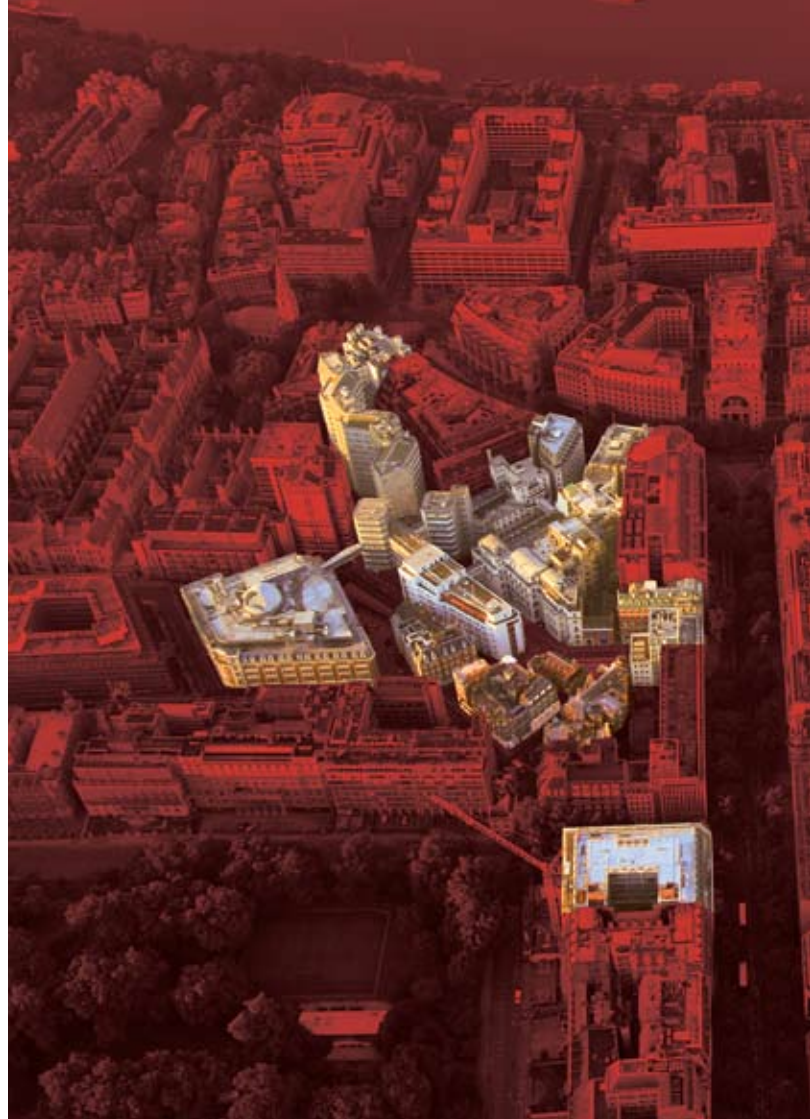
It is a specialist university with an international intake and a global reach. Its research and teaching span the full breadth of the social sciences, from economics, politics and law to sociology, anthropology, accounting and finance. As the 2008 Research Assessment Exercise confirmed, it has the highest percentage of world-leading research of any UK university.

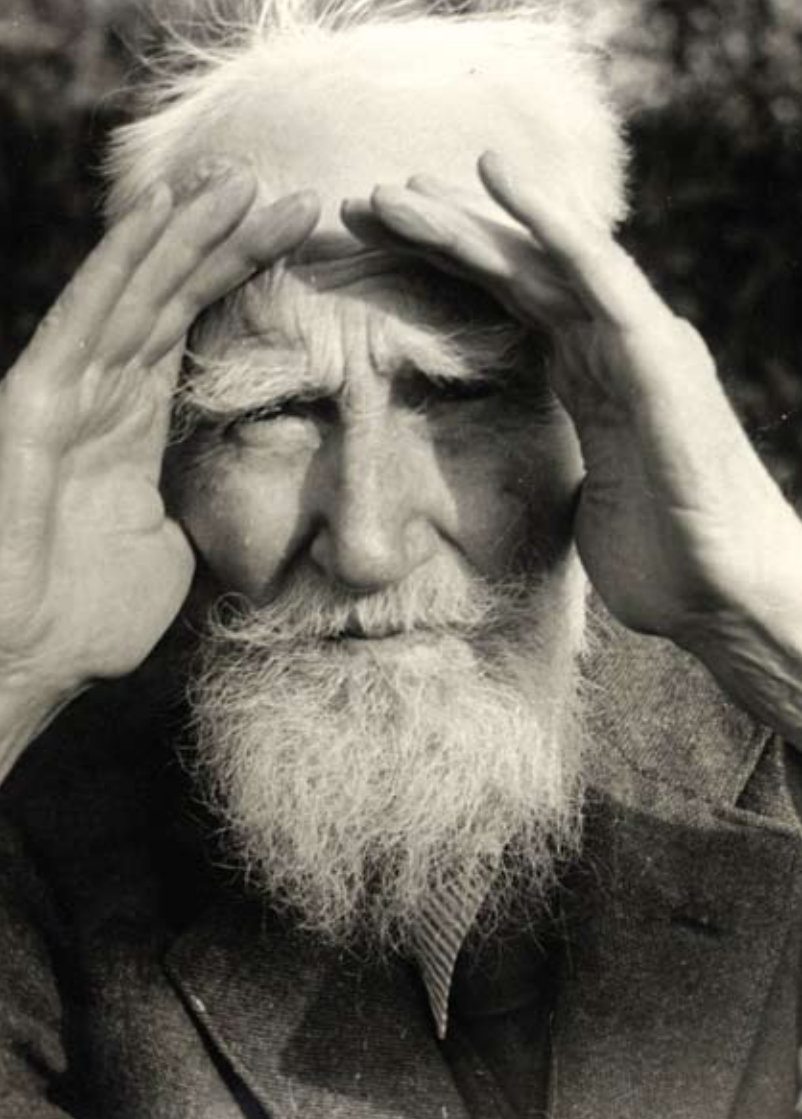
LSE is ranked among the world's top social science universities, along with Harvard, UC Berkeley and Stanford universities (*THE-QS World University Rankings 2008*).

---

*'LSE has been described as the place where the world comes to think and that rings true. Its research is relevant and global. It shapes and leads public debate.'*

**Howard Davies**, director of LSE





## History of LSE

The decision to create LSE was made by four leading members of the Fabian Society at a breakfast party in Surrey in August 1894. They were Beatrice and Sidney Webb, Graham Wallas and George Bernard Shaw. Within a year the School was founded, opening its doors in October 1895. In 1906 there were 181 postgraduates in the whole of England and Wales: 69 were at LSE.

The aim of the School was the betterment of society. In 1922 it adopted as its motto the phrase *rerum cognoscere causas* (from Virgil's *Georgics*), which means to know the causes of things. The industrious beaver was chosen as the School's emblem in the same year.

---

*Sidney Webb had a vision 'of a centre not only of lectures on special subjects but an association of students who would be directed and supported in doing original work.'*

From the diaries of **Beatrice Webb**

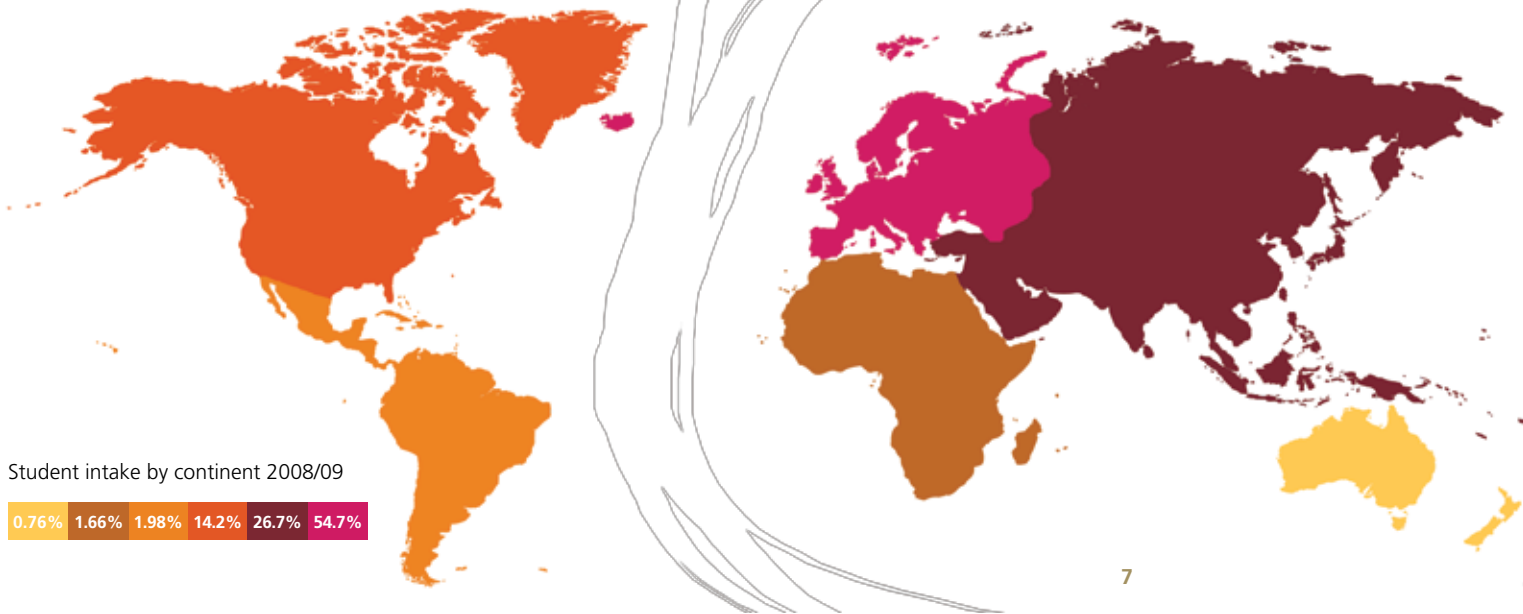
# Students and alumni

LSE has a cosmopolitan student body, drawing its students from around 140 countries worldwide, and a network of over 92,000 alumni in 196 countries.

In 2008/09 the School had 8,700 full-time students and over 800 part-time students. Of these, just over half were postgraduates. Around two thirds of students came from outside the UK.

*'The campus is like a small international village in the middle of London and people come here from all over the world. Getting to live and study with them is an invaluable experience.'*

**Anna Baumann**, 3rd year, BSc Sociology





*'Gordon Brown is hoping to be seen as a genuine global leader. He wants to show that he is the big man on the big stage when the big crisis hits.'*

**Professor Michael Cox** on the prime minister's talks with Barack Obama, *Washington Post*, 3 March 2009

*'Haringey have got a beautiful paper trail of how they failed to protect this baby.'*



**Dr Eileen Munro** comments on the death of Baby P, BBC Radio 4 Today, 12 November 2008

**Professor Willem Buitter** in his *Maverecon* blog for the *Financial Times*, 26 February 2009

*'Like its American and Dutch counterparts, this toxic asset insurance scheme is without redeeming social value: it is inefficient, unfair and expensive to the taxpayer.'*



*'We do not want a society where children are taught above all to look after number one, since we know from psychological research that a life which is devoted to more than yourself is intrinsically more satisfying.'*

**Lord Layard**, professor of social policy, in *The Guardian*, 3 February 2009



## Staff

LSE has a cosmopolitan staff, with about 45 per cent drawn from countries outside the UK.

In all, over 1,580 people work full-time for LSE and 1,470 part-time.

LSE staff are at the forefront of their disciplines. They advise governments, public bodies and government inquiries, and are frequently seconded to national and international organisations.

LSE academics are frequently in the news, commenting on major issues of the day. In 2008 these included the credit crunch, London mayoral elections, US presidential elections and climate change.

---

*'Two-thirds of our staff work in LSE departments ranked in the top five in the country, and 26 per cent work in departments ranked first in the country in the 2008 Research Assessment Exercise. We are a specialist university that has delivered outstanding results.'*

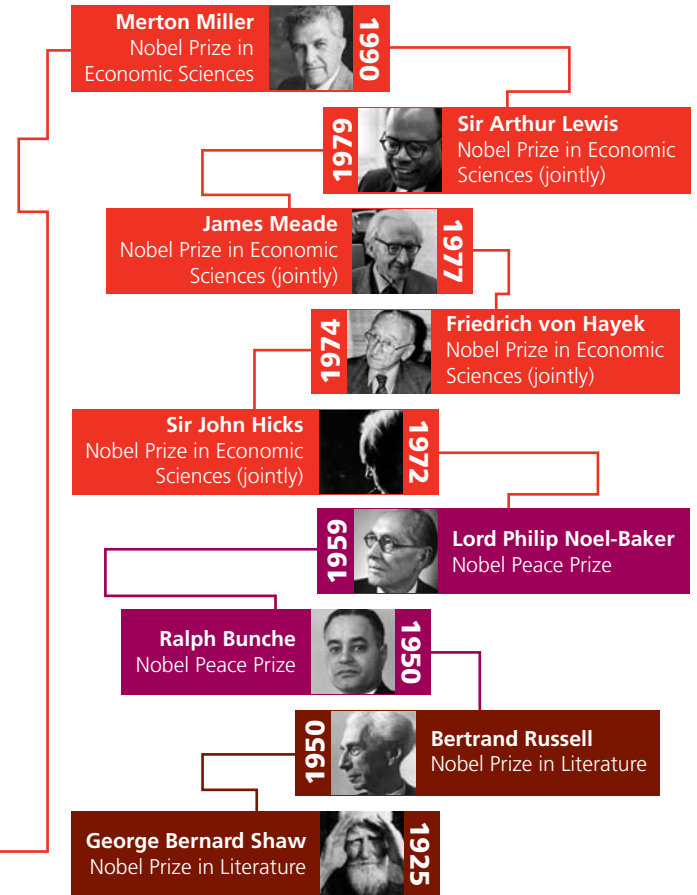
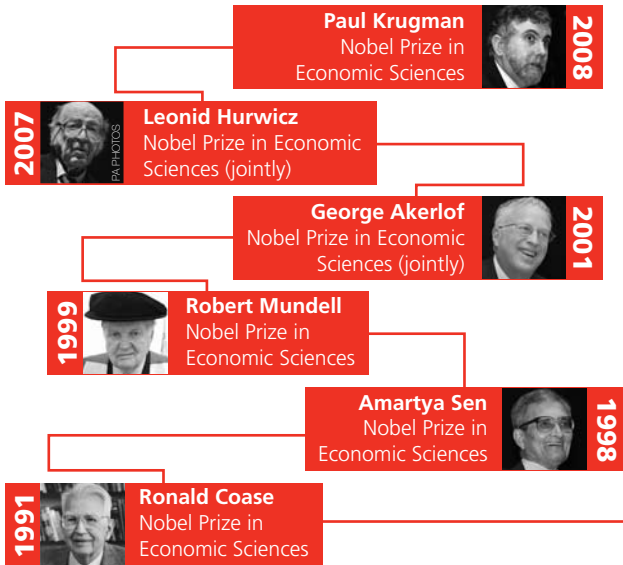
**Professor Sarah Worthington**, pro-director for research and external relations

# World leaders

In all, 34 past or present world leaders have studied or taught at LSE, including John Atta Mills, Shri KR Narayanan and Romano Prodi.

Thirty-one current members of the UK House of Commons and 42 members of the House of Lords have also either taught or studied at LSE.

A total of 15 Nobel prize winners in economics, peace and literature have been either LSE staff or alumni.



## Academic departments

Accounting

Anthropology

Development Studies Institute

Economic History

Economics

European Institute

Finance

Geography and Environment

Government

International History

International Relations

Language Centre

Law

Management

Mathematics

Media and Communications

Methodology Institute

Philosophy, Logic and Scientific Method

Social Policy

Sociology

Statistics

## Teaching

LSE offers a very wide range of undergraduate and postgraduate courses in the social sciences. Teaching is carried out through academic departments and interdisciplinary institutes, and in partnership with internationally renowned higher education institutions.

Economics is the largest department with over 1,000 students. Other large departments include law, accounting, finance, government and international relations. Between them LSE departments span the full range of social science disciplines.

Following a review by an internal Teaching Taskforce in 2008, LSE is set to spend an extra £2 million a year to ensure that its teaching is of the highest quality.

---

*'Students choosing to study at LSE know they will be taught by outstanding academics. We are famous for our world class research and we are working to ensure that the quality of our teaching is equally renowned.'*

**Professor Janet Hartley**, pro-director for teaching and learning

# Research

From its foundation over a hundred years ago LSE has aimed to be a laboratory of the social sciences, a place where ideas are developed, analysed, evaluated and disseminated around the world.

In 2008 LSE's outstanding success in the Research Assessment Exercise confirmed it as a world leading research university. The School had the highest percentage of world leading research of any university in the UK, topping or coming close to the top of a number of rankings of research excellence.

Individual subject areas, notably economics, law, social policy and European studies, also headed national tables of excellence.

There are currently 19 research centres at the School, ranging from large multidisciplinary centres with substantial financial support to smaller centres. These centres lead research in their fields and tackle some of the most pressing issues of our time.

Research is also carried out in academic departments and research groups. In all, LSE has one of the largest concentrations of applied economic, financial and social research anywhere in the world.

## Research centres

**Asia Research Centre**

**BIOS**

**Centre for Analysis of Risk and Regulation (CARR)**

**Centre for Analysis of Social Exclusion (CASE)**

**Centre for the Analysis of Time Series (CATS)**

**Centre for Civil Society**

**Centre for Climate Change Economics and Policy**

**Centre for Economic Performance (CEP)**

**Centre for Philosophy of Natural and Social Sciences (CPNSS)**

**Centre for the Study of Global Governance**

**Centre for the Study of Human Rights**

**Grantham Research Institute on Climate Change and the Environment**

**Financial Markets Research Group (FMG)**

**Ideas: Diplomacy and Strategy @ LSE**

**International Growth Centre**

**LSE Health and Social Care**

**LSE Cities**

**Spatial Economics Research Centre**

**Suntory and Toyota International Centres for Economics and Related Disciplines (STICERD)**





# Engagement

Set up to improve society and to 'understand the causes of things', LSE has always put engagement with the wider world at the heart of its mission.

From its location in the heart of London, the School links to communities across the world, from formal academic partnerships to advisory work with governments and international organisations.

LSE academics inform policy globally, shedding expert light on subjects from the international impact of the credit crunch and the rise of the 'Neo-Taliban' in Afghanistan to Chinese apprenticeships, UK school admissions and the economics of happiness. The full breadth of the social sciences studied at LSE gives its academics rich inter-disciplinary expertise to draw on, helping them understand the worldwide impacts of policies and trends.

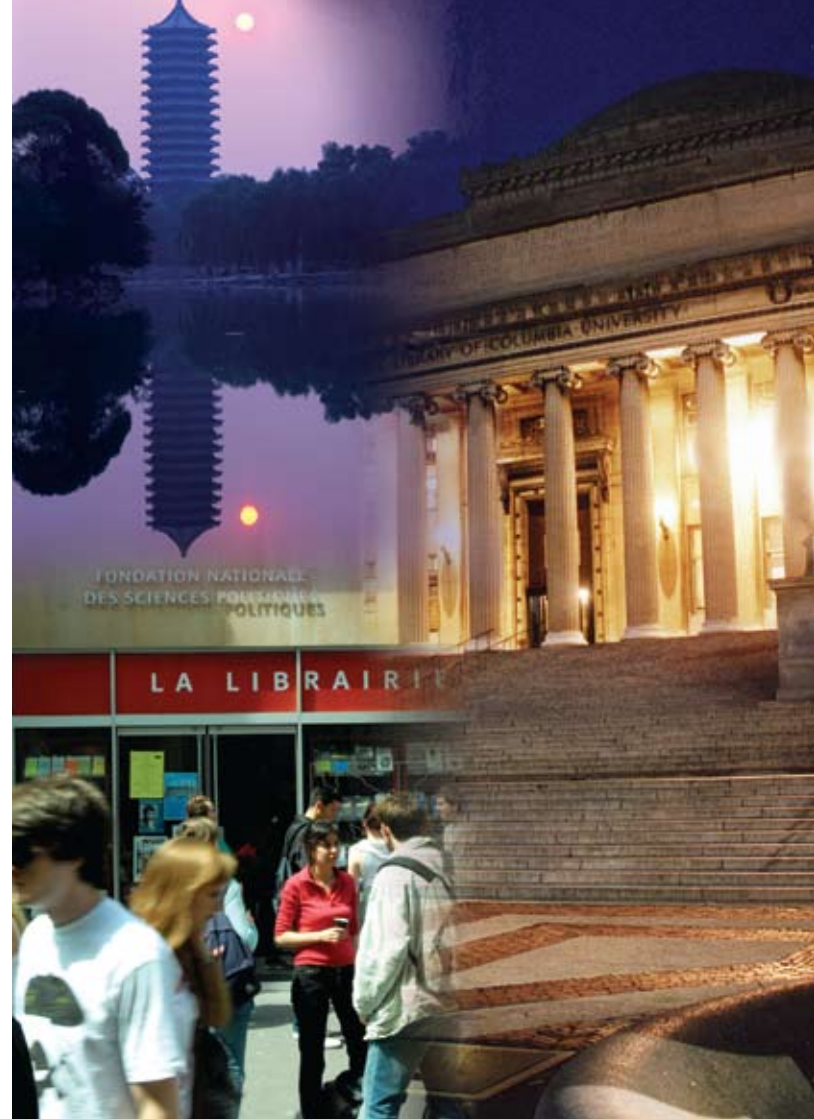
From the London teenagers who attend weekend classes at LSE, to the thousands of adults who flock to one of the largest Summer School programmes in Europe and to its daily public events and lectures, LSE engages and shares its research with different and disparate communities.

# International partnerships

LSE has established a global network with a small number of high quality universities across the world. With an emphasis on quality rather than quantity, these relationships serve to create strong and valuable links that enable both LSE and its institutional partners to provide innovative world class education to their students and to undertake innovative research, dealing with real problems.

There are multi-faceted institutional partnerships with Columbia University (New York), Sciences Po (Paris) and Peking University (Beijing), plus a developing partnership with the National University of Singapore. Collaborative activities include double and, less frequently, joint master's degree programmes, as well as faculty and PhD student exchanges.

Clockwise from top left: Peking University, Columbia University, Sciences-Po





## New Academic Building

In 2008 Her Majesty The Queen opened the New Academic Building at the School.

The £71 million building houses the School's Departments of Management and Law, and its new Grantham Research Institute on Climate Change and the Environment.

It has eight floors of teaching rooms, lecture theatres and offices and is built around a soaring central atrium flooded with natural light. It has also been designed to minimise its environmental impact, with water and energy saving devices throughout including solar heating which helps provide warm water.

LSE alumni and other supporters have helped to pay for the project, with donations and gifts from more than 20 countries across the world – including four gifts of £1 million or more.

---

*'It's a wonderful space which at last gives us the academic environment to match our academic reputation. The building will help reinvigorate teaching and learning at LSE. I'm sure it will also be a popular destination for the thousands of visitors who come to our public talks and other events.'*

**Howard Davies**, director of LSE

# Events

LSE has one of the most prestigious public events programmes in the world. World leaders such as Nelson Mandela, Dmitry Medvedev, Bill Clinton, Angela Merkel, Tony Blair and Gordon Brown have all spoken at LSE. Financial figures such as Ben Bernanke, current chair of the US Federal Reserve, Alan Greenspan, former chairman of the Federal Reserve Board and George Soros have drawn huge crowds.

The School has a vibrant arts and music programme and held its first literary festival in 2009.

For information on forthcoming events and for transcripts, podcasts and videos, see [lse.ac.uk/events](http://lse.ac.uk/events)

Clockwise from top left: President Bachelet of Chile; Bill Clinton; Ben Bernanke, chair of the US Federal Reserve; Professor Amartya Sen; Donald Tsang, chief executive of Hong Kong; Nelson Mandela; President McAleese of Ireland; President Kagame of Rwanda





## Library and IT

The LSE Library is the largest in the world devoted exclusively to the social sciences. Founded in 1896, it is also known as the British Library of Political and Economic Science. In 2001 it was redeveloped into a modern, energy efficient and visually stunning space.

The Library collects material on a worldwide basis, in all major European languages. The internationally recognised collections range from a European Documentation Centre to 90,000 historical pamphlets, with over 95 per cent of Library stock available on open access. Fifty kilometres of shelving – enough to stretch the length of the Channel Tunnel – accommodate over four million printed items including 31,000 past and present journal titles. The Library subscribes to around 20,000 e-journals.

IT Services supports the use of desktop and laptop computers, general office and specialist software, phones and mobile phones, and the IT and audio-visual technologies in the School's teaching and learning spaces. This includes an extensive training programme for both staff and students. In the Library itself there are 1,740 study places of which 450 have networked PCs and 200 offer laptop drop-in points.

Research by LSE academics is available to browse and download from the LSE Research Online collection at [eprints.lse.ac.uk](http://eprints.lse.ac.uk)

# Students' Union

The LSE Students' Union represents and campaigns for students on campus, provides support and advice, and runs student activities.

It runs a weekly newspaper, its own radio and TV stations, charity fundraising activities, a Dialogue Commission promoting conflict resolution, a shop, two cafés and three bars which provide a venue for one of London's top student nightclubs. The Students' Union is the only Students' Union in the country to hold a weekly Union General Meeting of over 150 students who vote on policy and hold officers to account.

The Students' Union funds and supports nearly 200 societies, covering a wide range of social, political, cultural and intellectual interests. As well as societies, it houses the Athletics Union, with over 30 sports clubs. It offers facilities including a fitness centre, badminton and squash courts and a gymnasium. The sports ground has football, rugby, cricket and tennis facilities.

LSE students are automatically members of the LSE Students' Union, as well as the University of London Union, which provides facilities for sports and recreation across London. The LSE Students' Union is also a member of the National Union of Students.





## Widening participation

LSE has a strong commitment to helping pupils from under-represented backgrounds to access higher education. The School is involved in a number of widening participation and access initiatives which aim to raise the aspirations of school and college students.

All activities are open to pupils from state schools and colleges across the Greater London area. Students from Year 6 through to Year 13 can take part in a variety of different projects including ACE (Aiming for a College Education), Pathways to Law, student tutoring, mentoring, summer schools and LSE CHOICE. During 2008-09, the Widening Participation team has launched Moving On, a Year 6 transition programme, and LSE Connect, a bespoke service to schools.

These projects are delivered by LSE's Widening Participation team, with the support of LSE academics, over 200 current LSE students and external funding from individual donors and organisations such as Goldman Sachs and the Sutton Trust. For more information, see [lse.ac.uk/studentRecruitmentServices](http://lse.ac.uk/studentRecruitmentServices)

## Careers Service

LSE's Careers Service provides a varied and comprehensive careers guidance and employment service for LSE students, including running events which make it easy for students to make contact with employers. LSE students are in demand and their average earnings six months after graduation are well above the UK average: in 2006/07 LSE graduates' average salary was £28,725, with earnings ranging from £145,000 to students doing unpaid internships. For further information see [lse.ac.uk/careersService](http://lse.ac.uk/careersService)

## Language Centre

The LSE Language Centre specialises in creating courses targeted to the needs of students and practitioners in the field of social science and related areas. In addition to modern foreign languages such as French, Russian, Spanish and Mandarin Chinese, the centre specialises in teaching English for specific purposes and runs a whole range of professional and executive programmes. For further information, see [lse.ac.uk/language](http://lse.ac.uk/language)





## Other forms of study

Students at institutions overseas are offered the opportunity to spend a year of fully integrated undergraduate study at the School through LSE's study abroad programme, the General Course. Applicants should have completed two years of university level study with a GPA of 3.3 or above. For more details, telephone +44 (0)20 7955 6613, email [gc@lse.ac.uk](mailto:gc@lse.ac.uk) or visit the website at [lse.ac.uk/generalCourse](http://lse.ac.uk/generalCourse)

LSE contributes academic direction and support to a wide range of the University of London degrees and diplomas that students can study wherever they are currently living. For more details, contact the University of London Information Centre, tel: +44 (0)20 7862 8398, email: [enquiries@london.ac.uk](mailto:enquiries@london.ac.uk), website: [londonexternal.ac.uk](http://londonexternal.ac.uk), or LSE External Study, tel: +44 (0)20 7955 7768, email: [externalstudy@lse.ac.uk](mailto:externalstudy@lse.ac.uk), website: [lse.ac.uk/LSEExternalStudy](http://lse.ac.uk/LSEExternalStudy)

The Summer School programme, which takes place between July and August, provides an opportunity to experience studying at LSE. Courses are taught and examined to LSE standards and are accepted for credit by numerous universities worldwide. For further details, telephone +44 (0)20 7955 7227, email [summer.school@lse.ac.uk](mailto:summer.school@lse.ac.uk) or visit the website at [lse.ac.uk/summerSchool](http://lse.ac.uk/summerSchool)

LSE also runs an innovative summer school in Beijing, China with its partner, Peking University.

# Scholarships and financial support

LSE awards around £12 million a year in student support, thanks in part to help from alumni, corporations, foundations and friends all over the world. Many students secure external funding and many finance their study through part-time work at LSE.

LSE support is available to students at all levels, and helps keep an LSE education within the reach of talented students regardless of means. At undergraduate and taught postgraduate levels, funding is primarily needs based, with additional named awards supporting those on particular programmes or from specific parts of the world. Postgraduate research students can apply for both merit and needs based funding. See [lse.ac.uk/financialSupport](http://lse.ac.uk/financialSupport)

# Advice for applicants

Prospective applicants can find out more about LSE by attending one of our Undergraduate Open Days or our Graduate Open Evening, by meeting LSE staff in over 30 countries worldwide, by emailing a current student or by reading our printed or online prospectus. For more information, see [lse.ac.uk/studentRecruitment](http://lse.ac.uk/studentRecruitment)



# Connecting with business

The Corporate Relations Unit at LSE is responsible for developing, designing and delivering long term, sustainable research partnerships with the corporate sector using the expertise of leading academics within LSE. It provides an entry point into the School and can liaise with the relevant academic departments to discuss research proposals. Email [corporaterelations@lse.ac.uk](mailto:corporaterelations@lse.ac.uk) or see [lse.ac.uk/CRU](https://lse.ac.uk/CRU)

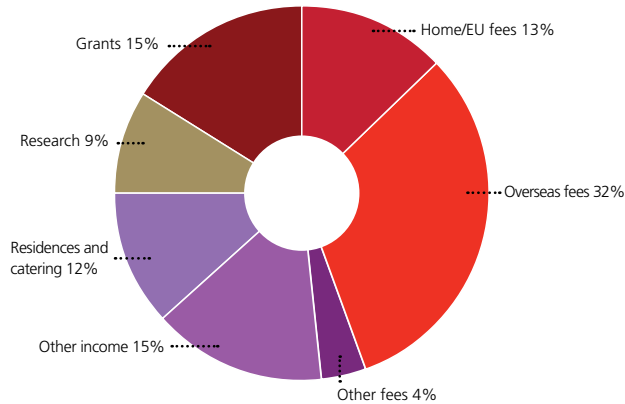
The School offers a gateway to a range of LSE expertise through a professional consultancy service, LSE Consulting. It is run by experienced project managers who specialise in matching the skills and talents of LSE's academic consultants with the needs of clients. Email [enterprise@lse.ac.uk](mailto:enterprise@lse.ac.uk) or see [lse.ac.uk/consulting](https://lse.ac.uk/consulting)

In addition, LSE offers a range of specialist teaching programmes:

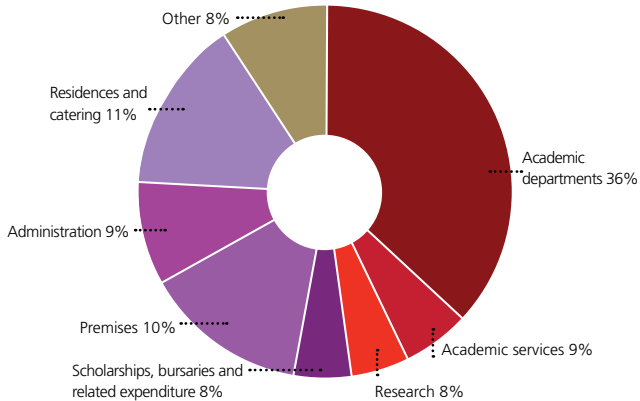
- LSE Executive Education design and deliver customised programmes for groups of executives in organisations around the world. See [lse.ac.uk/executiveEducation](https://lse.ac.uk/executiveEducation)
- The TRIUM executive MBA is offered in partnership with the NYU Stern School of Business and HEC, School of Management, Paris. See [triumemba.org](https://triumemba.org)
- Executive Summer School intensive one week courses for graduates and professionals. See [lse.ac.uk/summerSchool](https://lse.ac.uk/summerSchool)
- Tailored language tuition for individuals or small groups. See [lse.ac.uk/language](https://lse.ac.uk/language)



## 2007/08 income



## 2007/08 expenditure



# Finance

LSE had an annual income of just under £190 million for the financial year ending 31 July 2008.

# Governance

Howard Davies is director of the School. The governing body is the Council, chaired by Peter Sutherland. The principal academic body is the Academic Board, chaired by the director.

Published 2009

Registered address: The London School of Economics and Political Science, Houghton Street, London WC2A 2AE

The London School of Economics and Political Science is a School of the University of London. It is a charity and is incorporated in England as a company limited by guarantee under the Companies Acts (Reg No 70527).

Freedom of thought and expression is essential to the pursuit, advancement and dissemination of knowledge. LSE seeks to ensure that intellectual freedom and freedom of expression within the law is secured for all our members and those we invite to the School.

# Contacts

## **Alumni Relations Office**

Tel: +44 (0)20 7955 7361  
Email: [alumni@lse.ac.uk](mailto:alumni@lse.ac.uk)  
[www.alumni.lse.ac.uk](http://www.alumni.lse.ac.uk)

## **Conference and Events Office**

To book rooms at LSE:  
Tel: +44 (0)20 7955 7087  
Email: [event.services@lse.ac.uk](mailto:event.services@lse.ac.uk)  
[lse.ac.uk/conference](http://lse.ac.uk/conference)  
[AndEventsOffice](http://lse.ac.uk/AndEventsOffice)

For information on public lectures:  
Tel: +44 (0)20 7955 6043  
Email: [events@lse.ac.uk](mailto:events@lse.ac.uk)  
[lse.ac.uk/events](http://lse.ac.uk/events)

## **LSE Consulting and LSE Executive Education**

Tel: +44 (0)20 7955 7128  
Email: [enterprise@lse.ac.uk](mailto:enterprise@lse.ac.uk)  
[enterprise-lse.co.uk](http://enterprise-lse.co.uk)

## **Corporate Relations**

For long term corporate research and  
knowledge transfer partnerships:  
Tel: +44 (0)20 7107 5256  
Email: [corporaterelations@lse.ac.uk](mailto:corporaterelations@lse.ac.uk)  
[lse.ac.uk/CRU](http://lse.ac.uk/CRU)

## **Library**

Tel: +44 (0)20 7955 7229  
Email: [library@lse.ac.uk](mailto:library@lse.ac.uk)  
[lse.ac.uk/library](http://lse.ac.uk/library)

## **Press Office**

Tel: +44 (0)20 7955 7060  
Email: [pressoffice@lse.ac.uk](mailto:pressoffice@lse.ac.uk)  
[lse.ac.uk/press](http://lse.ac.uk/press)

## **Research and Project Development**

Tel: +44 (0)20 7955 7113  
Email: [m.yau1@lse.ac.uk](mailto:m.yau1@lse.ac.uk)  
[lse.ac.uk/research](http://lse.ac.uk/research)  
[AndProjectDevelopmentDivision](http://lse.ac.uk/AndProjectDevelopmentDivision)

## **Student Recruitment Office**

For course enquiries and a copy of  
the undergraduate or postgraduate  
prospectus:  
Tel: +44 (0)20 7955 6613  
Email: [stu.rec@lse.ac.uk](mailto:stu.rec@lse.ac.uk)  
[lse.ac.uk/studentRecruitmentServices](http://lse.ac.uk/studentRecruitmentServices)



# [lse.ac.uk](http://lse.ac.uk)

