



LSE Saw Swee Hock Southeast Asia Centre



LSE-Southeast Asia Early Career Researcher Network News

11 October 2020

Please send us any news from you to seac.admin@lse.ac.uk to share the news with our ECR members

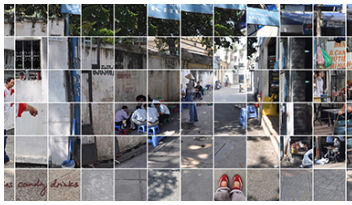
Upcoming SEAC Events



The Production of Jakarta's Water Crisis: A Political Ecology of Speculative Urbanism

On 14th October, Dr Emma Colven (Assistant Professor of Global Environment, University of Oklahoma) will be leading a research seminar, speaking on the topic of Jakarta's "water crisis" in relation to its temporalities and spatialities. Further details can be found [here](#).

Masterclass: Mapping Transdisciplinary Data for Spatial Justice

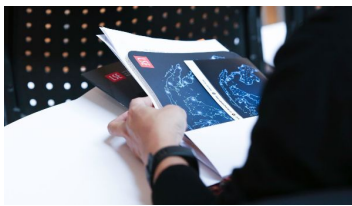


On 16th October, Dr Annette M. Kim (Associate Professor, Sol Price School of Public Policy, University of Southern California) will follow up her talk on 7th October by undertaking a research masterclass for PhD students and early career researchers. Further details can be found [here](#).



COVID-19 and Southeast Asia Webinar Series

On 19th and 21st October, as part of SEAC's COVID-19 and Southeast Asia project, SEAC invites the contributors to SEAC's [Southeast Asia Blog](#) to share their insights from the region. More information about the events will be available soon.



LSE Southeast Asia Week 2020

SEAC's flagship event LSE Southeast Asia Forum will be held as a week-long series of online discussions titled [LSE Southeast Asia Week](#) from 26th to 30th October. Check out its exciting programme from [here](#). More information about the series of events will be available soon.

ECR Network News and Updates

20 OCT
Leann Mooney (Senior Lecturer in Sociology, Social Policy and Criminology, University of Liverpool, UK) **Terrace Southeast Asia**: A History of the Transformation of a Colonial Space to a Modern Metropolis
Roundtable: Decolonising Higher Education

20 OCT
Annette Kim (Associate Professor, Sol Price School of Public Policy, University of Southern California, USA) **Missing Transdisciplinary Data for Spatial Justice Migration and Urbanisation in Vietnam and Beyond**

19 OCT
Ernest Calvez (Assistant Professor in Urban Governance, The Urban Institute, Singapore) **Water, Water, Water: The Political Ecology of Reproductive Urbanism**

20 OCT
Southeast Asia and COVID-19 Webinar Series

20 OCT
Southeast Asia Week Roundtable Discussions

19 OCT
Rita Padarung (Senior Lecturer, Singapore University of Social Sciences) **Planning the City and from Southeast Asia**

19 OCT
Johann Loh (Research Fellow, Institute for Social Development Studies, National University of Singapore) **Just and Inclusive Recovery: The Informal, Intimate and Relational Economies of Yangon Street Vending**

20 NOV
Kah Beng Loh (Senior Research Fellow, University of Malaya, Malaysia) **So-Called Southeast Asian Urbanisation: Theoretical Debates, Debates, and Beyond**

20 NOV
Dr Do Young Oh (Senior Lecturer, School of Geography, Queen's University Belfast, UK) **Boundaries, Dislocation and History of Southeast Asia**

2 DEC
Marianne Sabido (Assistant Lecturer, Department of Geography, University of Northumbria, UK) **Impacts of Accelerated Urbanisation in Yangon, Myanmar**

2 DEC
Laurie Anderson (Senior Lecturer, School of Urban Studies, York University, Canada) **The Commodification of Domestic Workers and the Creation of Extension of Labour Markets**

AUTUMN 2020

ALL OUR EVENTS ARE ONLINE AND OPEN TO ALL. VISIT OUR WEBSITE FOR MORE DETAILS: www.lse.ac.uk/SoutheastAsiaWeek

New SEAC Seminar Series

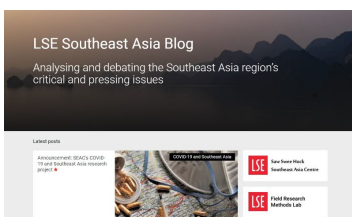
SEAC is pleased to announce the new seminar series starting for this coming term. We have an exciting range of speakers joining us from the UK, Singapore, Australia, the US, The Netherlands, France and more. The series will be running every Wednesday fully online, and most events take place at noon (UK time) to let our Southeast Asia-based audiences to join the event easier. The weekly schedule and full details of each event can be on the SEAC website (<https://www.lse.ac.uk/seac/seminars>).

We are also looking for our ECR network members to attend one of the seminars and write reflections from the events. Your reflections will be posted on SEAC's new Southeast Asia blog (<https://blogs.lse.ac.uk/seac/>). As a token of appreciation, we are preparing a book token worth £25 for participating members. Please contact SEAC Interim Centre Manager Dr Do Young Oh (seac.admin@lse.ac.uk) to indicate your intention.

SEAC has re-launched LSE Southeast Asia Blog

SEAC is bringing the SEAC Blog in house from the Medium to be in line with those of other centres and institutes, while contributed pieces will enjoy greater visibility and exposure. The new address for the LSE Southeast Asia Blog is <https://blogs.lse.ac.uk/seac/>.

SEAC is welcoming contributions from our ECR network members introducing their research to wider audiences.

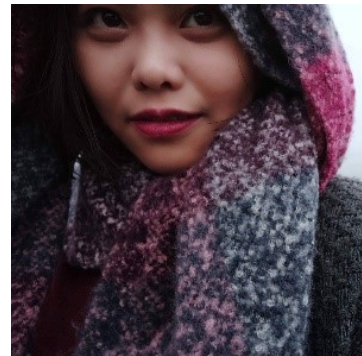


New Publications and Media



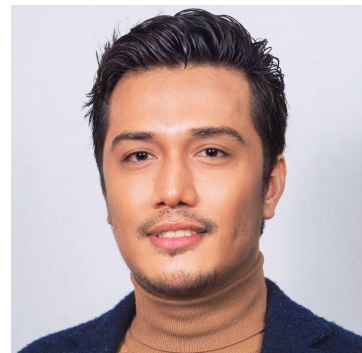
ECR Network member Al Lim (Yale) had a busy summer producing various outcomes. Al published a co-authored [article](#) in *City & Society* regarding the COVID-19 situation in Singapore. Al also published two short pieces regarding [Myanmar's COVID-19 stimulus package](#) and a [green COVID-19 recovery](#). Al also published a co-authored book chapter titled '[Learning to Thrive: Educating Singapore's Children for a Climate-Changed World](#)'.

ECR Network member Tin Alvarez (UCL) published a co-authored book chapter in an edited volume, titled '[Cities of Dignity: Urban Transformations Around the World](#)', published by Rosa-Luxemburg-Stiftung. Tin and her colleague are showing the urban commons as praxis radically reconfigures the spaces we inhabit, reconstitutes social relations, and re-politicises urban citizenship towards the creation of “cities of dignity” in their book chapter.



ECR Network member Hasrul Hanif (University of Sheffield) published a co-authored article '[When global norms meet local politics: Localising transparency in extractive industries governance](#)' in *Environmental Policy and Governance*. This article explores the politics of norm localisation through an empirical investigation of how global norms of 'transparency' were localised in sub-national processes of extractive industry governance in Bojonegoro, Indonesia.

ECR Network member Dr Michael Intal Magcamit (Queen Mary University of London) published an article titled '[Imagined Insecurities in Imagined Communities: Manufacturing the Ethnoreligious Others as Security Threats](#)' in *International Studies Quarterly*. In this article, Michael examines the underlying causal mechanisms driving rival ethnoreligious factions within pluralistic polities to frame each other as threats to their relative security, power, and status, focusing on the case of Indonesia.

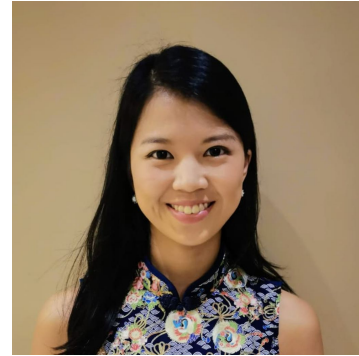


ECR Network member Dr Do Young Oh (LSE SEAC) published a new article in the *Journal of Urban History*. Do Young's new article titled '[The University and East Asian Cities: The Variegated Origins of Urban Universities in Colonial Seoul and Singapore](#)'



explores and compares the development of colonial urban universities in Seoul and Singapore for the purpose of examining the multifaceted and scaled socio-political relationships in colonial cities.

ECR Network members Felicia Liu (KCL) and Dr Thomas Smith's (SEAC Associate and LSE Geography and Environment) co-authored article '[Contrasting communications of sustainability science in the media coverage of palm oil agriculture on tropical peatlands in Indonesia, Malaysia and Singapore](#)' was published in *Environmental Science & Policy*. The article analyses the media portrayal of peatland agricultural practices, focusing on the narratives surrounding the 2016 International Peat Congress.



ECR Network member Dr Thomas Smith (SEAC Associate and LSE Geography and Environment) published another co-authored article in *Area*. The article titled '[An optimal environment for our optimal selves?: An autoethnographic account of self-tracking personal exposure to air pollution](#)' presents an autoethnographic study which tracks the experience of routinely monitoring personal exposure to air pollution, using Plume Labs' 'Flow' device.

Opportunities

SEAC is seeking a new Centre Manager (full-time, 2-year fixed term). Work with us at a multidisciplinary research centre in a world-class social science institution. The application deadline is midnight 29th October 2020. More information can be found [here](#).



As part of the LSE Southeast Asia Week (SEAW), SEAC is collaborating with the Association of Southeast Asia Studies (UK) to host a roundtable event for early career researchers on 27th October 2020, 3-4.30 pm BST (GMT + 1).

We would like to have some of the ECR members as panelists in the roundtable to share your thoughts on what would be key areas of concerns for early career researchers during the ongoing pandemic.

Your inputs during the event will be passed on to the Centre Directors' Forum event taking place on 28th October. Centre



Directors based in Singapore, Hong Kong, Sydney, Lund and Copenhagen will be in conversation with SEAC Director to share their thoughts on Southeast Asian Studies and also respond to your thoughts.

Please send an email, by 14th October, to SEAC Interim Manager, Dr Do Young Oh (seac.admin@lse.ac.uk), if you want to be one of the speakers for the event. When you express your interest in participating, please include a summary (max. 50 words) regarding what you see as major challenges for early career researchers working in/on the Southeast Asian region.

Please let me know if you have any queries and we look forward to hearing from you.

SEAC will host a book launch for Prof Katherine Brickell's new book '[Home SOS: Gender, Violence, and Survival in Crisis Ordinary Cambodia](#)' on 27th January 2021. We want to invite an ECR network member as a discussant for the book launch. Please get in touch with us at seac.admin@lse.ac.uk by 19th October (Monday), if you want to take part in.



SEAC offers a Seminar Series and Networking Grant, for which it considers applications on a rolling basis. The scheme is open to Centre Associates, LSE academic/research staff and LSE Early Career Researchers, including PhD students. Non-LSE ECRs are also encouraged to collaborate with LSE-based colleagues to apply for funding. The scheme is intended for seminar series, study groups or networking events focusing on social science issues relevant to Southeast Asia, aligning with one or more of SEAC's core [research themes](#) of urbanisation, connectivity and governance. You can find more info [here](#). If you'd like to discuss an idea before applying, please feel free to get in touch with us at seac.admin@lse.ac.uk.

Goethe University Frankfurt am Main is hiring a Senior Lecturer in Southeast Asia Studies with a focus on Indonesian/Malaysian language, literature, media or modern history (application deadline: 27th October)

More information can be found [here](#).



The National University of Singapore, Faculty of Social Science is hiring a Tenure-Track Assistant Professor (with a PhD in Anthropology focusing on Southeast Asia). The application deadline is 15th November.

More information can be found [here](#).

Yale-NUS College has multiple openings.

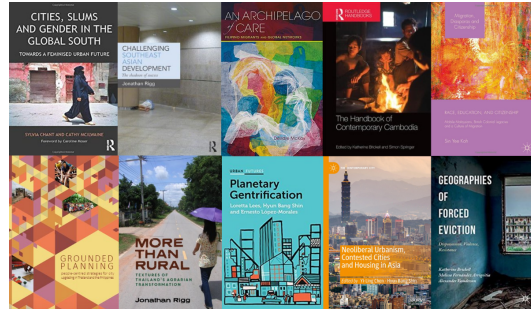
The first position opened is Assistant Professor of History (Southeast Asia Specialisation). The application review begins on 1st November 2020. More information can be found [here](#).

The Second position is a tenure-track position in Urban Studies.

Scholars who use mixed methods for analyzing and visualizing urban questions are preferred for the position. More information can be found [here](#).



Don't forget, SEAC hosts a wealth of publications by staff and Associates and podcasts of past SEAC events, which you can access via the [SEAC Publications and Media page](#).



[Supporting the LSE Saw Swee Hock Southeast Asia Centre](#)



If you like the work that SEAC is doing, please consider [supporting us](#) to help expand the impact of our activities.



The Saw Swee Hock Southeast Asia Centre (SEAC) is a multi-disciplinary Research Centre within the London School of Economics and Political Science.

Building on the School's deep academic and historical connections with Southeast Asia, SEAC seeks to foster world-leading academic and policy research with a focus on the Southeast Asian social and political landscape.

SEAC is LSE's gateway to understanding Southeast Asia.

The Saw Swee Hock Southeast Asia Centre was established with the generous support of [Professor Saw Swee Hock](#).



LSE Saw Swee Hock Southeast Asia
Centre · London School of Economics,
Houghton Street · London, London
WC2A 2AE · United Kingdom