



## LSE Saw Swee Hock Southeast Asia Centre




### **Welcome to the May edition of the ECR Newsletter!**

We have rounded up recent updates about the activities and news of your fellow ECR Network members.

**We are delighted to share a wide range of publications covering:**

- Youth employment in G20 countries
- Post-abortion care in developing countries
- The shifting meanings of sustainability
- Visual international politics
- Indonesia's capital relocation
- Higher education in the pandemic
- Buddhist initiation ceremony in Myanmar
- ... and many more!

**There are great opportunities to get involved:**

-  Sign up for the Centre's research seminar this Wednesday on the consequences of sand extraction in Southeast Asia

- 🗣️ Amidst the recent election of Marcos, Jr. in the Philippines, the Centre's hosting a public event on "Electoral Dystopias in the Philippines: From Colonial Democracy to Duterte and the Return of the Marcoses", find out more about how to register below.
- 📣 Westminster Foundation for Democracy (WFD) is looking for a Thailand-based research partner to develop research on the barriers to women's political leadership and participation.
- 📅 ASEAS(UK) extends the deadline for its call for panels and papers to the 2022 conference

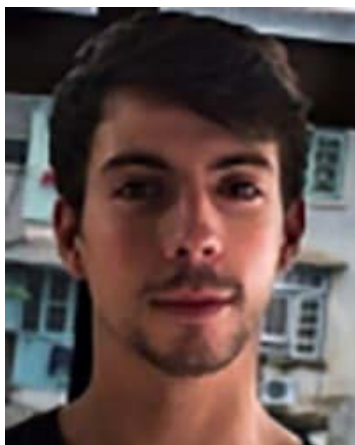
*Note: If your information has changed in the past year (i.e. a new job, a completed PhD or a new research focus), please let us know by emailing [seac.admin@lse.ac.uk](mailto:seac.admin@lse.ac.uk). Please get in touch with your news and updates if you would like them to be included in the next ECR Newsletter.*

## ECR Network News and Updates



### **Shona Loong completes DPhil and starts as a lecturer in political geography**

Shona Loong has just started as an Oberassistentin (lecturer/senior researcher) in political geography at the University of Zurich after completing her DPhil at the School of Geography and Environment at the University of Oxford in early 2021. She will be continuing her research on conflict, peacebuilding, and the politics of International Development in Karen State, Myanmar, and hopefully elsewhere in Southeast Asia.



### **Dominique Dillabough-Lefebvre launches a new media project**

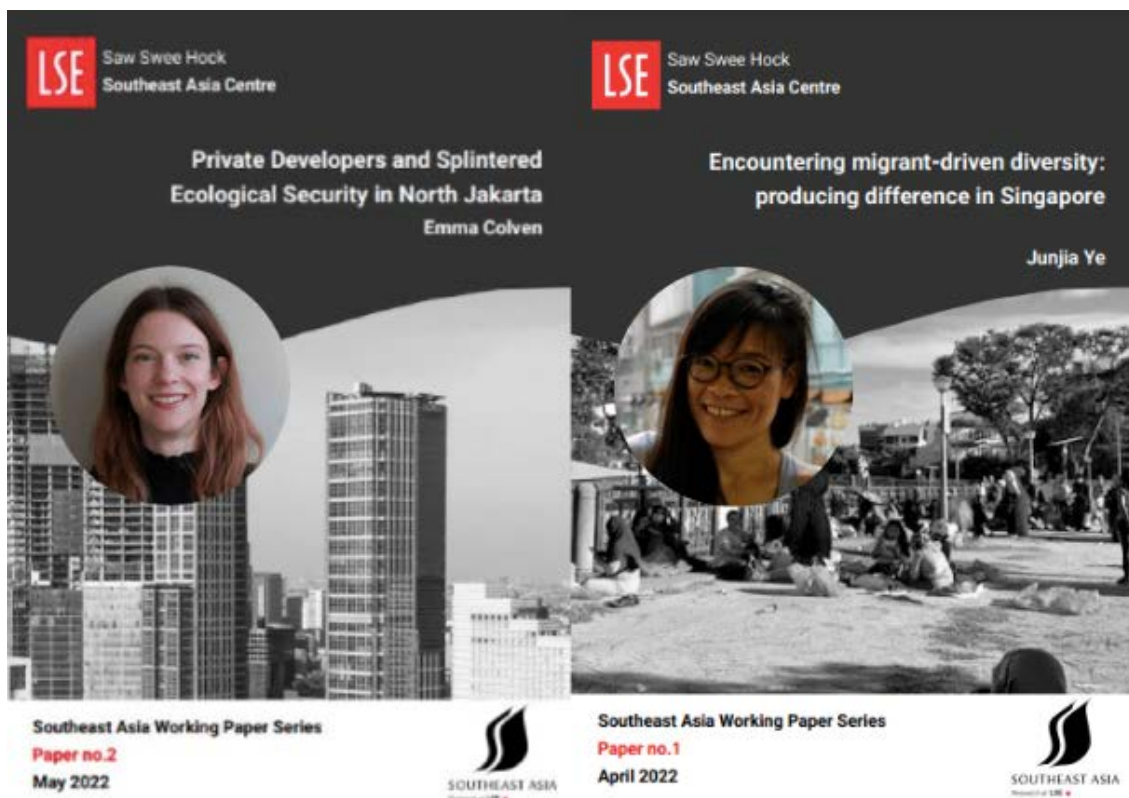
Dominique Dillabough-Lefebvre has launched a mixed-media collaborative project with a local filmmaker in Southeastern Myanmar. Click [here](#) to see a series of films, photographs and ethnographic reflections on land, memory, loss and resilience in Karen communities in Burma.



## Frega Wenas Inkiriwang receives a promotion

Frega Wenas Inkiriwang, PhD, FHEA, has been promoted to Colonel on 1 April 2022. Colonel Wenas Inkiriwang has assumed the new position as the Military District Commander in Jakarta on 24 January 2022.

## New Publications and Media



## SEAC announces the launch of the Southeast Asia Working Paper Series

SEAC is delighted to launch our new [Southeast Asia Working Paper Series](#) which publishes critical and constructive dialogues on region-related affairs. The goal of the Southeast Asia Working Paper Series is to showcase work-in-progress research by the SEAC community, and is open to contributions from all

disciplines that SEAC engages with.

✓ Working Paper no.1 by former Visiting Fellow Junjia Ye explores [migrant-driven diversity in Singapore](#).

✓ Working Paper no.2 by former Visiting Fellow Emma Colven explores [private developers and splintered ecological security in north Jakarta](#).



### **Joanna Octavia published a paper on youth employment**

Joanna Octavia, Doctoral Researcher at the Institute for Employment Research, University of Warwick, co-drafted the Y20 Indonesia 2022 White Paper. The paper focuses on social safety nets for informal and non-standard forms of employment and youth social entrepreneurship. The Y20 is the official youth engagement group of the G20, bringing together young leaders representing the G20 countries.

[Y20 Indonesia 2022 White Paper: Youth Employment in the G20](#)

### **Ibnu Habibie shares a new publication on post-abortion care**

Ibnu Habibie shared the latest publications in the *BMC Health Service Research* as a co-lead author. Using a systematic review, the paper depicts a clearer picture from 12 developing countries of how costly it is for women to access Post-abortion Care (PAC) services.

[The cost of post-abortion care \(PAC\): a systematic review](#)



### **Al Lim publishes a journal article on sustainability**

Al Lim, PhD Student at the Department of Anthropology and School of the Environment, Yale University, published a piece on "Sustainability as a Moral Discourse: Its Shifting Meanings, Exclusions, and Anxieties" at *Sustainability* as a co-author.

[Sustainability as a Moral Discourse: Its Shifting Meanings, Exclusions, and Anxieties](#)



## Benjamin Ho Tze Ern publishes an article on visual international politics

Benjamin Ho Tze Ern, Assistant Professor at the China Programme, S. Rajaratnam School of International Studies, the Nanyang Technological University, published an article which seeks to draw on the theoretical insights of scholars of visual international politics to analyze the ongoing geopolitical conflict between the United States and China.

[The Avengers and the PLA Wolf Warrior: Popular Narratives and Major Power Competition](#)



## Ahmad Rizky M. Umar publishes an article on Indonesia's capital relocation

Ahmad Rizky M. Umar published a new article exploring the regional security implications of Indonesia's capital relocation. It is [jointly published](#) with New Mandala.

[What are the regional security implications of Indonesia's capital relocation?](#)

## Maria Pilar Lorenzo's study wins recognition

Maria Pilar Lorenzo's study on Philippine higher education recently [won 2nd Place](#) in Cluster I in the Academic E-Poster Competition of the National Research Council of the Philippines' 2022 Annual Scientific Conference (Theme: Digital Transformation in Research: Powers and Perils) held on 15 March 2022. The study was published recently in *Globalisation, Societies and Education*.

[ASEAN regionalism and cross-border research of Philippine higher education: the case of the University of the Philippines Diliman campus](#)



Recently, she was also featured at **Hear My Voice - Women's Network** in their [Woman of the Week](#) section.



### **Pon Souvannaseng completes a fellowship and publishes a new article**

Pon Souvannaseng, Assistant Professor at the Global Studies Department, Bentley University, has just completed a Wilson Center China Fellowship from 2021 - 2022 with a forthcoming brief to be out in April.

Her newest article is also out now in the Winter Issue of Asian Perspective.

[US/Japan-Chinese Rivalry, Financial Crises, and Explaining Shifts in Hydropower Finance Regimes in the Mekong](#)

She also attended the Association for Asian Studies Conference 2022 as a panel presenter and will now serve as a Network B organizer for the Society for the Advancement of Socio-Economics (SASE) going forward.

### **Wannaphong Durongkaverroj publishes an article on higher education**

Wannaphong Durongkaverroj, lecturer in Economics at the Ramkhamhaeng University, Bangkok, Thailand, recently published an article on the impact of covid-19 pandemic on higher education in the context of developing countries.

[The fight to not be left behind: Higher education in the pandemic](#)



### **Dr. Michael Edwards publishes a journal article**

Stéphen Huard, anthropologist, Research and Teaching Fellow at EHESS in Paris, shared a recent translation in English of a special issue of the journal *Moussons* (a French journal specialising in Southeast Asia studies) as a co-editor. The issue is on non-commercial transactions in Southeast Asia.

[The Stakes of Transfers: Ethnography of Discomfort During a Buddhist Initiation Ritual in Myanmar](#)

The whole issue is freely available online [here](#).




## Events and Opportunities



**LSE** Saw Swee Hock Southeast Asia Centre  
London School of Economics and Political Science

**SOUTHEAST ASIAN WATERS SERIES:  
EXPANDING TRANSBOUNDARY WATER GOVERNANCE: A MOBILE  
POLITICAL ECOLOGY OF SAND AND SHIFTING RESOURCE-BASED  
LIVELIHOODS IN SOUTHEAST ASIA**

Wednesday 18 May 2022, 12:00pm to 1:15pm BST

 **Prof. John Sidel**  
Sir Patrick Gillam Chair in  
International and Comparative  
Politics, LSE SEAC Associate

 **Dr Vanessa Lamb**  
Senior Lecturer in  
Geography, University  
of Melbourne

More information about  
SEAC Events please visit  
[lse.ac.uk/seac/events](http://lse.ac.uk/seac/events)



### **Expanding Transboundary Water Governance: A Mobile Political Ecology of Sand and Shifting Resource-Based Livelihoods in Southeast Asia**

An unprecedented rise in sand extraction from rivers and coasts for use in construction and urban development is impacting resource-based livelihoods, prompting scholars to declare “a looming tragedy of the sand commons”. As part of the SEAC Southeast Asian Waters Seminar series, Dr. Vanessa Lamb (Senior Lecturer, School of Geography, University of Melbourne) will speak on sand extraction and its consequences in Southeast Asia.

📍 Register for this event [here](#).



THE LONDON SCHOOL  
OF ECONOMICS AND  
POLITICAL SCIENCE

## **ELECTORAL DYSTOPIAS IN THE PHILIPPINES: FROM COLONIAL DEMOCRACY TO DUTERTE AND THE RETURN OF THE MARCOSES**

Date: Wednesday 25 May, 2022, 4:00pm (BST)  
Registration: Eventbrite



**Prof. John Sidel**  
(chair)

Sir Patrick Gillam Chair in  
International and Comparative  
Politics, LSE SEAC Associate



**Prof. Vicente L. Rafael**

Professor of History and  
Southeast Asian Studies,  
University of Washington in  
Seattle



More information  
about SEAC  
Events please visit  
[lse.ac.uk/seac/ev  
ents](https://lse.ac.uk/seac/events)

### **Electoral Dystopias in the Philippines: From Colonial Democracy to Duterte and the Return of the Marcoses**

Against the backdrop of the final days of the Duterte presidency and the recent election of Ferdinand "Bongbong" Marcos, Jr. in the Philippines, Professor Vicente L. Rafael will examine the colonial roots of elections in the organization of native collaboration and counterinsurgency under Spain and the US. The talk will conclude with a look at contemporary practices today and the results of the 2022 presidential elections.

📍 Register for this event [here](#).



### **Thailand-Based Research Partner Needed: Research on Barriers to Women's Political Leadership and Participation in ASEAN**

Westminster Foundation for Democracy (WFD) is looking for a Research Partner to collaborate with and develop research on the barriers to women's political leadership and participation in Indonesia, Malaysia, and Thailand, situated within the context of ASEAN, particularly as manifest in violence against women in politics. The Research Partner will be Thailand-based, ideally working in consortia with partners/organisations in Indonesia and Malaysia to



deliver this work.

It is anticipated that this research will take place between June–August 2022 with a deadline for the final research reporting suite of 19 August 2022. This research project has a total budget allocation of £12,000.

**Submission Deadlines:** 3 June 2022

**For more details** visit WFD's [webpage](#).



## **Association of Southeast Asian Studies UK Conference 2022 Call for Panels and Papers**

ASEAS(UK) invites scholars and PhD students from all academic disciplines with an interest in Southeast Asia to submit panels that explore relevant research topics from an interdisciplinary perspective. Panels and events will be held in morning, afternoon and evening slots to provide maximum flexibility for those presenting. Conveners are welcome to suggest a particular UK time slot for their panel given.

**Submission Deadlines:** 27 May 2022

**Please email proposals to:** [aseasconference2022@gmail.com](mailto:aseasconference2022@gmail.com)

**For more details** and a list of possible panel themes and subjects visit ASEAS's conference [webpage](#).

---

Don't forget, SEAC hosts a wealth of publications by staff and Associates and podcasts of past SEAC events, which you can access via the [SEAC Publications and Media page](#).





The Saw Swee Hock Southeast Asia Centre (SEAC) is a multi-disciplinary Research Centre within the London School of Economics and Political Science.

Building on the School's deep academic and historical connections with Southeast Asia, SEAC seeks to foster world-leading academic and policy research with a focus on the Southeast Asian social and political landscape.

SEAC is LSE's gateway to understanding Southeast Asia.

The Saw Swee Hock Southeast Asia Centre was established with the generous support of [Professor Saw Swee Hock](#).

