



THE LONDON SCHOOL
OF ECONOMICS AND
POLITICAL SCIENCE ■

Department of Gender: LSE Careers, options with a Gender degree and building a career plan

Rachel Power – LSE Careers Consultant
r.t.power@lse.ac.uk



lse.ac.uk/careers



THE LONDON SCHOOL
OF ECONOMICS AND
POLITICAL SCIENCE ■

Today

- **Options with an LSE Gender degree**
- **Overview of LSE careers - how we can help**
- **Where you are now?**
- **Some thoughts on next steps**
- **Q&A**



lse.ac.uk/careers



THE LONDON SCHOOL
OF ECONOMICS AND
POLITICAL SCIENCE ■

But first.. What's most surprised you about being a gender student at LSE so far?

Reflecting on experiences and transitions – and not just positive or straightforward ones – is an important part of professional development and understanding what your next move after LSE could look like





THE LONDON SCHOOL
OF ECONOMICS AND
POLITICAL SCIENCE ■

LSE Careers: Who we are and what we do

Careers Consultants > Employer Engagement > Student Experience

- Understand your options
- Make connections
- Find the right opportunities
- Develop key skills
- Market yourself effectively

lse.ac.uk/careers



THE LONDON SCHOOL
OF ECONOMICS AND
POLITICAL SCIENCE

It's not all banking and consultancy

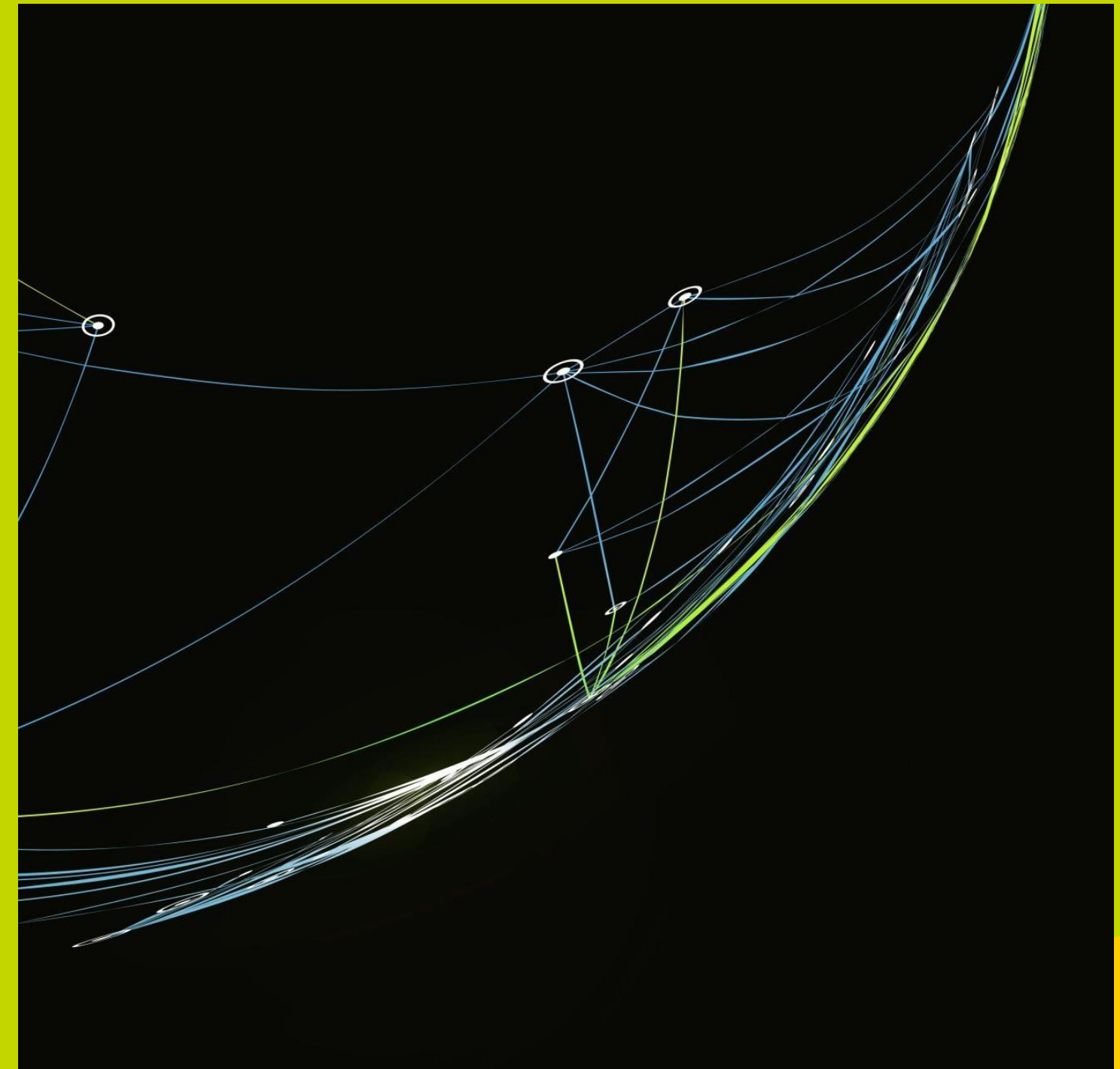
Sector focused careers programmes:

Autumn Term

- Discover International Development
- Discover Public Sector and Policy Discover Careers with Social
- Discover Global Brands
- Discover Sustainability

Winter Term

- Discover Data and Tech
- Discover Political Risk
- Discover Creative Industries
- Careers In China
- Careers in Brussels



lse.ac.uk/careers



THE LONDON SCHOOL
OF ECONOMICS AND
POLITICAL SCIENCE ■

Department of Gender: career Planning and the recruitment process



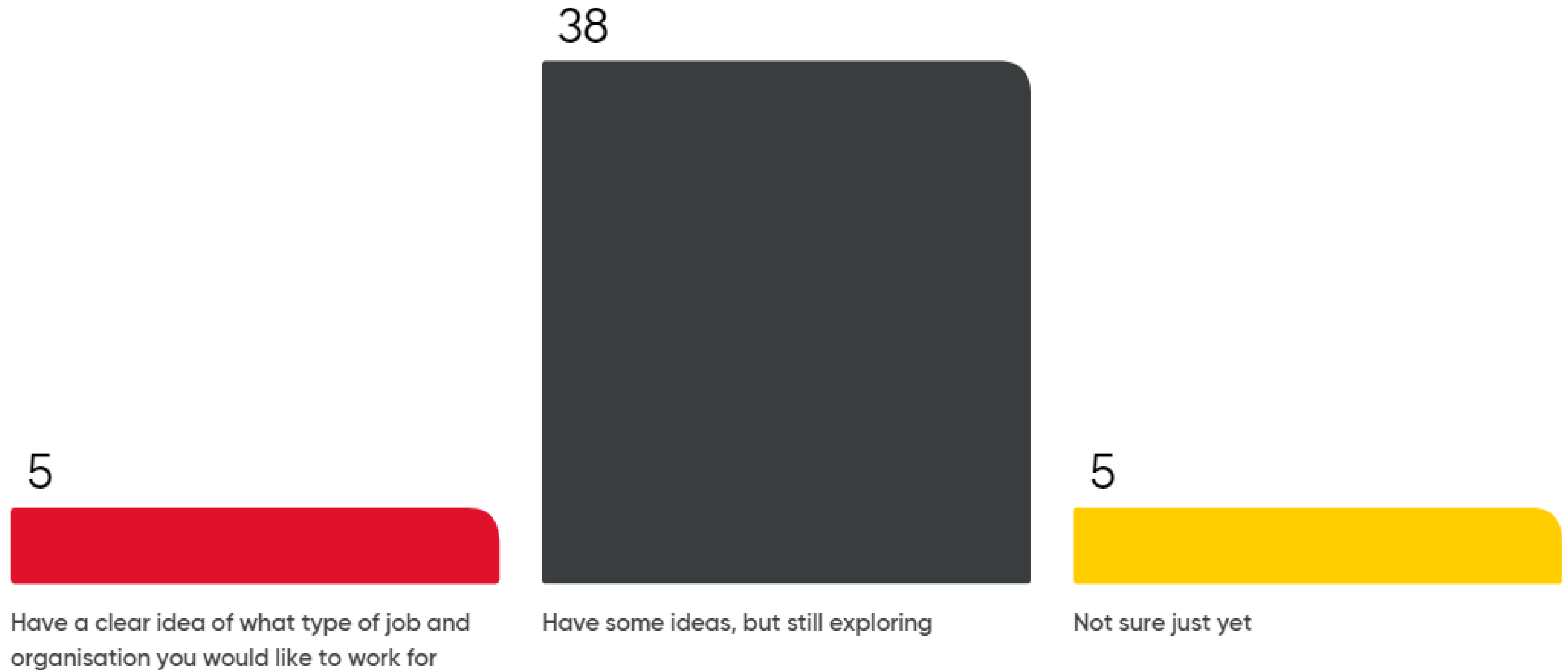
Career planning: where you now?

Go to menti.com and use code:

3686 5985



Career planning: where you now?



Structuring your thinking



Question?

How important is it to you that the organization and/or job role has a primary focus on gender?

Don't worry if you don't know the answer now, but keep this in mind as you research organisations and job roles



THE LONDON SCHOOL
OF ECONOMICS AND
POLITICAL SCIENCE

Some organisations Gender Students have gone on to work with..

Deloitte

HanTang Culture

Watercourse Studios

Crisis Action

London School of Economics

University of Vienna

Kings College London

University of Oxford

Alberto Hurtado University

Choice for Youth and Sexuality

Bupa

**Gender and
Development Network**

ICEF Canada

**International
Labour Organisation**

UNICEF

Women of china

**European Forum of
LGBT Christian Groups**

Involve

Ashoka

**Standing Together
Against Domestic Violence**

Breast Cancer Now

Ashoka

CIRCLE

Oxfam

Scottish Parliament

Finance Canada

Habinteg

UK government

Wonder Foundation

HWA Tai Publishing

Unite Students

**Institute of Technology
and Society of Rio de
Janeiro**

Instituto Promundo

**Courtland
Communications**

Ethical Trading Initiative

Mama Cash

**Social Development
Direct**

Endeavor Lebanon

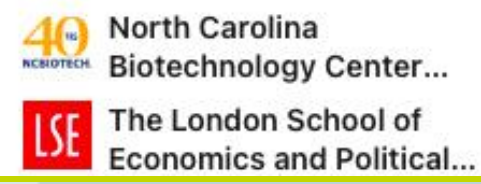
PLAN UK

lse.ac.uk/careers

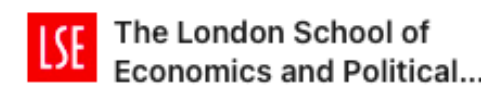
Your LSE Gender Alumni Community



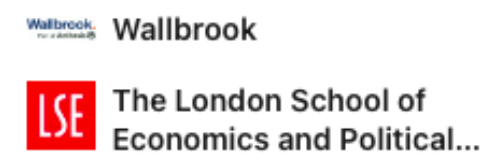
Pearl Sullivan (She/Her) · 1st
Economic Development | Community Engagement | Workforce Development



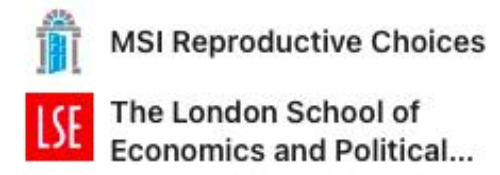
Bharati Kondepudy (She/Her) · 1st
Centre Administrator at LSE Phelan US Centre



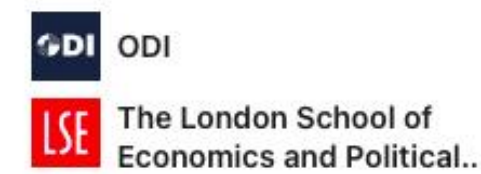
Christie Makuwa (She/Her) · 1st
Business & Human Rights | Gender | ESG | Sustainability
London, England, United Kingdom · [Contact info](#)



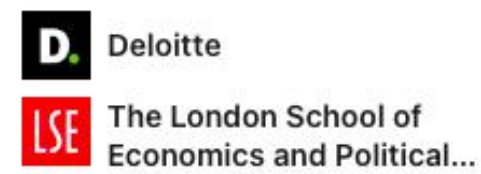
Chloé Hanse (She/Her) · 1st
Evidence & Impact Advisor at MSI Reproductive Choices | LSE Gender
London, England, United Kingdom · [Contact info](#)



Prerna Naidu (She/Her) · 1st
Gender and Inclusion at ODI | LSE | सिनेमा & Cultures
London, England, United Kingdom · [Contact info](#)



Tzeitel Degiovanni (She/Her) · 1st
Consultant at Deloitte (Payroll and Workforce Management) | Diversity and Inclusion Specialist



Just a few examples of amazing alumni!

[c.uk/careers](https://www.lse.ac.uk/careers)



Some areas of interest: gender

International
Development

International
Organisations

Policy and
research

Consulting and
technology

HR and EDI

NGOs and
Charities

Media and
Journalism

Activism

Entrepreneurship

Tip: you don't need to know a lot about any of the areas above. Use these as a guide to structure and inform your career research

lse.ac.uk/careers

Example. Thinking about a sector: International Development

Each sector of interest will include different types of organisation with varying sources of funding, objectives and outcomes.

Tip: think about your values and apply these when you research organisations of interest.





THE LONDON SCHOOL
OF ECONOMICS AND
POLITICAL SCIENCE

<https://info.lse.ac.uk/current-students/careers/information-and-resources/employment-sectors>

LSE Careers Sector Information Pages

Provides an overview and resources for some of key occupational areas of interest

Careers in international development

This page explores the options that may be available to you in the field of international development, including routes in and the ways LSE Careers can support you.

What is a career in international development?

International development offers a wide range of opportunities. You could be working in policy development, developing donor relations, delivering aid on the ground, supporting colleagues through HR initiatives...the list goes on. What underpins the work is a desire to promote economic and human development in developing countries.

It's a popular sector with LSE graduates and you'll find alumni working in the sector all over the world. Many will have done a master's qualification and most will have gained relevant experience through volunteering or internships. As you progress in your career it's common to become more specialist and expert in a particular field.

Where can I work, what can I do, and how can I get there?

Print or share



Explore our Discover | International Development programme: Find out more

lse.ac.uk/careers



Sectors: developing your knowledge

Entry routes

- Consulting, international organisations, corporates, law, civil service
- Strict application dates and processes; recruitment funnels
- History of early engagement and experience in the sector
- Off cycle internships and post-degree applications

Internships are critical for some sectors

- Marketing, creative industries, culture and heritage, journalism, charities and NGO's (stipend if you're lucky), political sector
- **Internships demonstrate motivation & commitment; helping your CV**

Importance of volunteering

- Critical for some careers – third sector, law. The Volunteer Centre in LSE Life can help!



Finding opportunities

Advertised roles

- **Direct employer adverts, recruitment consultancies, job sites**
- **Be aware of deadlines & timings**
- **Review regularly, rolling postings**
- **CareerHub & Careers blog**

Speculative applications

- **Research the organisation, develop contacts**
- **Tailor applications – focus on what you can do for them**

Network – for information & speculative applications

- **Personal contacts**
- **Alumni/Linkedin**

Some ideas: Gender/development/equality information and jobs (you may have other sources!)

GenderJobs.org	https://genderjobs.org/	Devex International Development Opportunities	https://www.devex.com/
Gender and Development Network	https://gadnetwork.org/	Women's Leadership in Small & Medium Enterprises	WLSME
Association for Women's Rights in Development	https://www.awid.org/	International Centre for Research on Women	https://www.icrw.org/
Jobs and internships in UK parliament	https://w4mp.org/	Global Fund for Women	https://www.globalfundforwomen.org/
UN women	https://www.unwomen.org/en/about-us/employment	Women's Grid	https://www.womensgrid.org.uk/
European Affairs jobsite	https://www.eurobrussels.com/	Woman Kind	https://www.womankind.org.uk/
Women's Budget Group	https://wbg.org.uk/	European Research Executive Agency – Gender in Research and Innovation	https://rea.ec.europa.eu/gender-eu-research-and-innovation_en
The Community for Equality and Diversity in UK	https://www.diversitylink.co.uk/	Women In Development Europe+	WIDE+
Bond UK Network for Organisations Working in International Development	https://www.bond.org.uk/	Third Sector	https://www.thirdsector.co.uk/
Charity Jobs	https://charityjob.org	Refuge	https://refuge.org
		The AIRE Centre	https://www.airecentre.org/

Doing the groundwork

Analyse skills and strengths

- Specific knowledge
- What skills have you acquired from your degree and other sources?
- Strengths – what are you good at? - what comes easily to you?

Consider interests, values, motivation

- Values – will change so reassess over time
- Enjoyment & needs – be honest

Research the options

- Employment sectors
- Organisations
- Job types, content
- Requirements

Understand where you fit

- Networking
- Work shadowing
- Informational interviewing



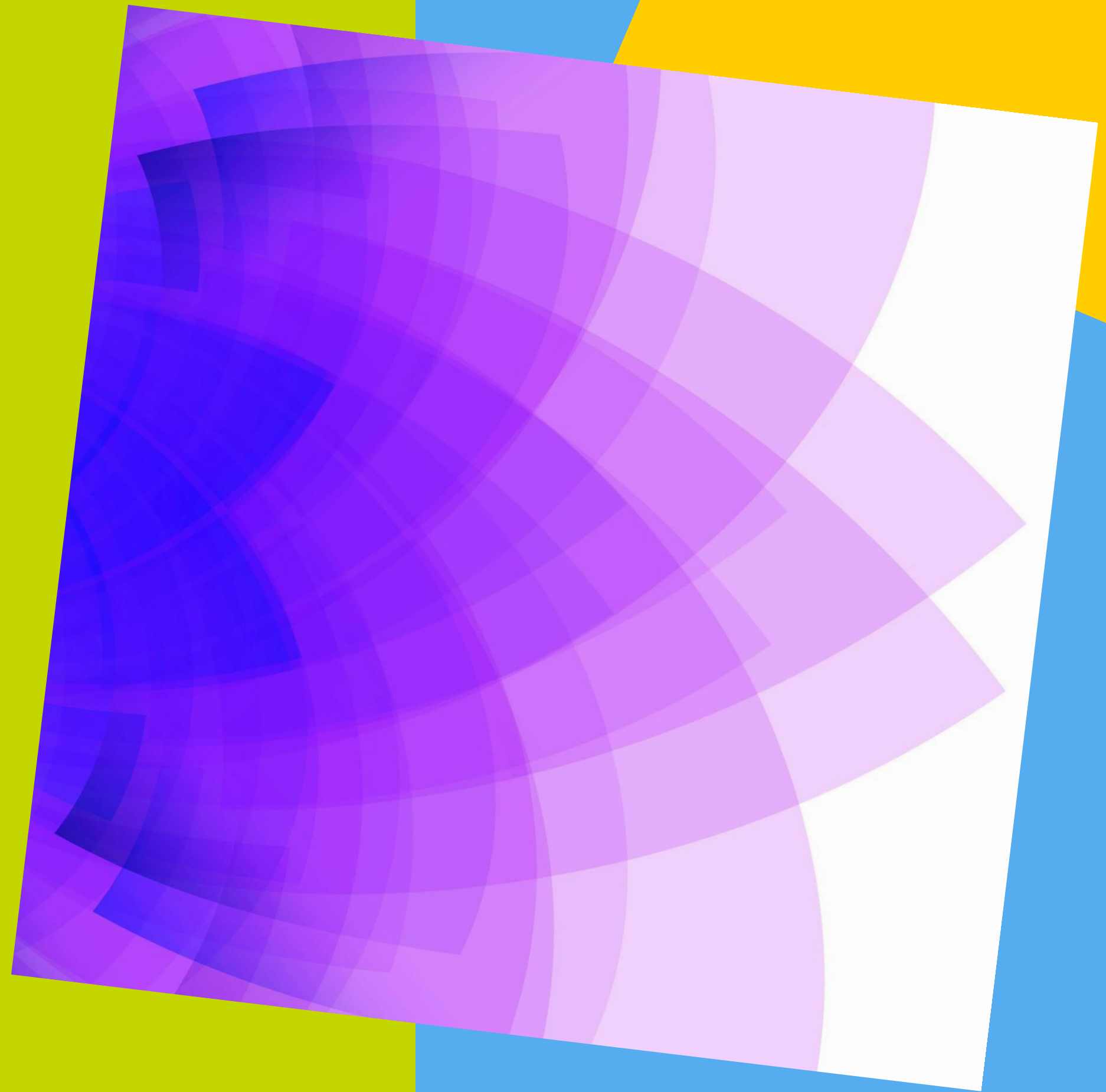
THE LONDON SCHOOL
OF ECONOMICS AND
POLITICAL SCIENCE ■

Doing the groundwork – let's think together.

What's the best career decision
you have made so far?

How did you go about this?

What can you learn from this?





THE LONDON SCHOOL
OF ECONOMICS AND
POLITICAL SCIENCE ■

Want to get started now? One idea -Update your CV

- **Find help resources, including sample documents via the LSE Careers Website:**
- <https://info.lse.ac.uk/current-students/careers/information-and-resources/application-process/cvs>
- <https://info.lse.ac.uk/current-students/careers/information-and-resources/application-process/cover-letters>
- <https://info.lse.ac.uk/current-students/careers/information-and-resources/application-process/application-forms>
- **Get automated CV advice via our CareerSet online CV checking tool**
- <https://info.lse.ac.uk/current-students/careers/information-and-resources/online-tools/CareerSet>



THE LONDON SCHOOL
OF ECONOMICS AND
POLITICAL SCIENCE ■

Questions?

