



Dear **{!Contact.FirstName}**,

LSE is world renowned for its academic reputation in the social sciences.

LSE academics - many of whom teach undergraduate students! - are engaged in research that is shaping the world. Look no further than the [Grantham Research Institute](#), a leading global force in the study of climate change and the environment; or [LSE IDEAS](#), our foreign policy think-tank, which was acknowledged as the [number one university-affiliated think tank in the UK and second in the world](#) in 2020.

---

## LSE Research

LSE's outstanding contribution to social science, has [been recognised](#) by the 2021 Research Excellence Framework (REF), the most recent REF. LSE is shown as the top university in the UK, based on the proportion of 'world-leading' research. LSE is also the joint second ranking university in the UK overall, when considering research outputs, research impact and research environment.

Take a look at three of the [Impact Case Studies](#) below:



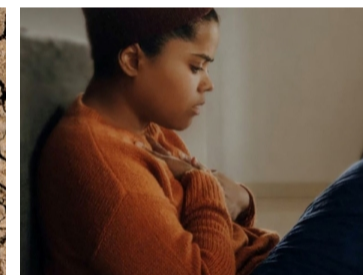
Improving refugee protection policies in Europe

**European Institute**



Shaping global climate change policy

**Grantham Research Institute**



Supporting policy and practice change for better mental health

**Care Policy and Evaluation Centre (CPEC)**

---

## Academic Opportunities for Students

In addition to the expertise already on campus, a wide range of eminent and knowledgeable individuals are regularly invited to speak to the LSE community. Our popular [Public Lecture Programme](#) has brought prominent speakers from around the world to LSE, including President of the EU Commission and LSE alumna Dr Ursula von der Leyen; US Speaker of the House Nancy Pelosi; Nobel Prize winners Amartya Sen and Paul Krugman; former UK-Prime Minister Gordon Brown, plus many more. If you'd like to sample some of the lectures, you can find them on our [website](#).

If you haven't already, follow [@LSE\\_GeneralCourse](#) on Instagram to see more of student life in London.

Best wishes,  
**The GO LSE team**  
Diogo, Lauren, Mark, Rachel & Will

---

**Disclaimer:** GO LSE Offer Holder Newsletters are sent to all those holding either a conditional or an unconditional offer to join the programme. *If you hold a conditional offer to join the GO LSE exchange programme, you will need to fulfil the specific conditions of your offer by the relevant deadline to confirm your place on the programme.*